



LIVABLE CITY FORUM

7–8 March 2017 Tartu



Livable City Forum Tartu

The 3rd event in Live Baltic Campus forum series addresses city-university relationship in space, discussing the following questions:

- ◆ Which are the principles of the spatial planning of university space?
- ◆ How do universities evoke the migration of creative class and the development of knowledge economy?
- ◆ How are university landscapes related to the environmental and social values of cities?
- ◆ What are the benefits of stakeholder involvement and multilateral cooperation in spatial planning of universities?
- ◆ How do campuses influence the activities and mobility of university members?

LCF Tartu 2017 organisers:

Department of Geography, Tartu University

Kristi Post, kristi.post@ut.ee

Age Poom, age.poom@ut.ee

Rein Ahas, rein.ahas@ut.ee

Tartu City Government

Indrek Ranniku, indrek.ranniku@raad.tartu.ee

Tõnis Arjus, tonis.arjus@raad.tartu.ee

#LBCforum

livebalticcampus.eu/forum



UNIVERSITY OF TARTU



LIVE BALTIC
CAMPUS



Programme

TUESDAY 7 MARCH

- 9:00–12:15 Partner meeting** @ Main Building, Ülikooli 18-228
12:30–13:30 Lunch @ Restaurant Polpo, Rütli 9
13:00–14:00 Registration @ Main Building, Assembly Hall, Ülikooli 18
- 14:00–17:30 Forum: spatial development principles of universities** @ Assembly Hall, Ülikooli 18
- 14:00 Opening, **Erik Puura**, Vice Rector, Tartu University
14:15 **Frank Witlox**, Professor, Ghent University
Walk the liveable city. On travel behaviour, lifestyles, and sustainable urban mobility
14:45 **Michael Hebbert**, Professor, University College London
City and Campus: how learning rediscovered its urban roots
15:15 **Rein Ahas**, Professor, Tartu University
Campus, creative jobs, and urban mobility
15:35 Coffee break
16:05 **Johan Colding**, Assoc Professor, Stockholm Resilience Centre
University and resilient urban environment
16:25 **Karl Samuelsson**, PhD candidate, University of Gävle
Efficient or livable? - A paradox for creating sustainable urban environments
16:45 Panel discussion
- 19:00–22:00 Forum dinner** @ Restaurant Aparaat, Kastani 42



Programme

WEDNESDAY 8 MARCH

- 9:00–12:00 Workshop** @ Physicum, W. Ostwaldi 1-A411
9:00 **Age Poom**, Smart-phone and GPS tracking in space-time research
Anto Aasa, Spatial analysis in practice
10:00 Planning workshop based on the profiles of campus users
10:00–12:00 Steering group meeting @ Institute of Technology, Nooruse 1-144
12:00–13:00 Lunch @ Café Du Nord, Nooruse 1
13:00–14:30 Walking tour: Tartu campus areas @ Nooruse 1 to Narva Str 3
- 14:30–17:00 Forum: city perspectives** @ SPARK Tartu, Narva Str 3
14:40 **Jarno Laur**, Deputy Mayor, Tartu City Government
14:50 **Kadri Arrak**, SPARK Tartu Demo Centre
15:05 **Pille Metspalu**, Planning Consultant, Hendrikson & Ko
Indrek Ranniku, City Planner, Tartu City Government
Synergy in spatial planning and land use – the case of Tartu University
15:45 Coffee break
16:05 **Tõnis Arjus**, City Architect, Tartu City Government
Densifying the urban core. The story of DELTA IT study building
16:30 **Raimond Tamm**, Member of Board, Tartu Science Park
Successful smart city development depends on multilateral cooperation
- 17:30–20:00 Partner meeting with dinner** @ University Café, Ülikooli 20



Presenters



Frank Witlox is professor of economic geography at Ghent University. His research focuses on travel behaviour, land use, sustainable mobility issues, business travel, city logistics, globalization and world city-formation. He edits *Journal of Transport Geography* and *Tijdschrift voor Economische en Sociale Geografie*.



Michael Hebbert is professor of town planning in the Bartlett School, UCL, and professor emeritus of the University of Manchester. He previously taught at the London School of Economics and Oxford Polytechnic. He has widely published on the history of town planning, he edits the journal *Planning Perspectives*.



Johan Colding is research coordinator of urban studies at the Beijer Institute of Ecological Economics. His research areas include biodiversity conservation, ecosystem management, institutional analyses, social-ecological system interactions, and urban ecosystem management with a focus on urban design.



Karl Samuelsson is Ph.D. candidate in geospatial information science at University of Gävle. He is interested in urban social-ecological systems and human well-being, especially in developing spatially explicit methods for examining how ecological and social qualities can co-exist in the urban environment.

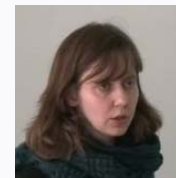


Anto Aasa is researcher in human geography at Tartu University. He focuses on the analysis of space-time data and his research interests include GIS, spatial statistics, mobile positioning, information and communication technology, bioclimatology, and phenology.



Rein Ahas is professor of human geography at Tartu University. He is the inventor of mobile positioning based methods in urban studies. His research focuses on population spatial mobility, information and communication technologies, and ICT based urban monitoring technologies.

Presenters



Pille Metspalu is geographer and has been active in the field of spatial planning over 15 years. She is the leading regional and master planning consultant in Hendrikson&Ko Ltd, a lecturer of spatial planning in Tartu University and a member of the board of Estonian Association of Spatial Planners.



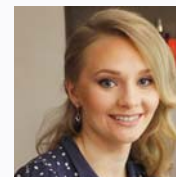
Indrek Ranniku is the head of City Planning Department of Tartu City Government. As a geographer from his background, he has been engaged with master planning, detail planning, and spatial development strategies of Tartu city for over 20 years.



Tõnis Arjus has been city architect for 5 years and the head of Department of Architecture and Building for 2 years. Besides his main obligations, he has had an important role for speaking on behalf of a more human-friendly cityscape and managing quite a few public space projects.



Raimond Tamm is member of board in Tartu Science Park and Tartu Regional Energy Agency. As a former deputy mayor of Tartu, he was involved with land use planning, architecture and building, and development strategies. He is currently the spokesman of energy and smart city issues in Tartu.

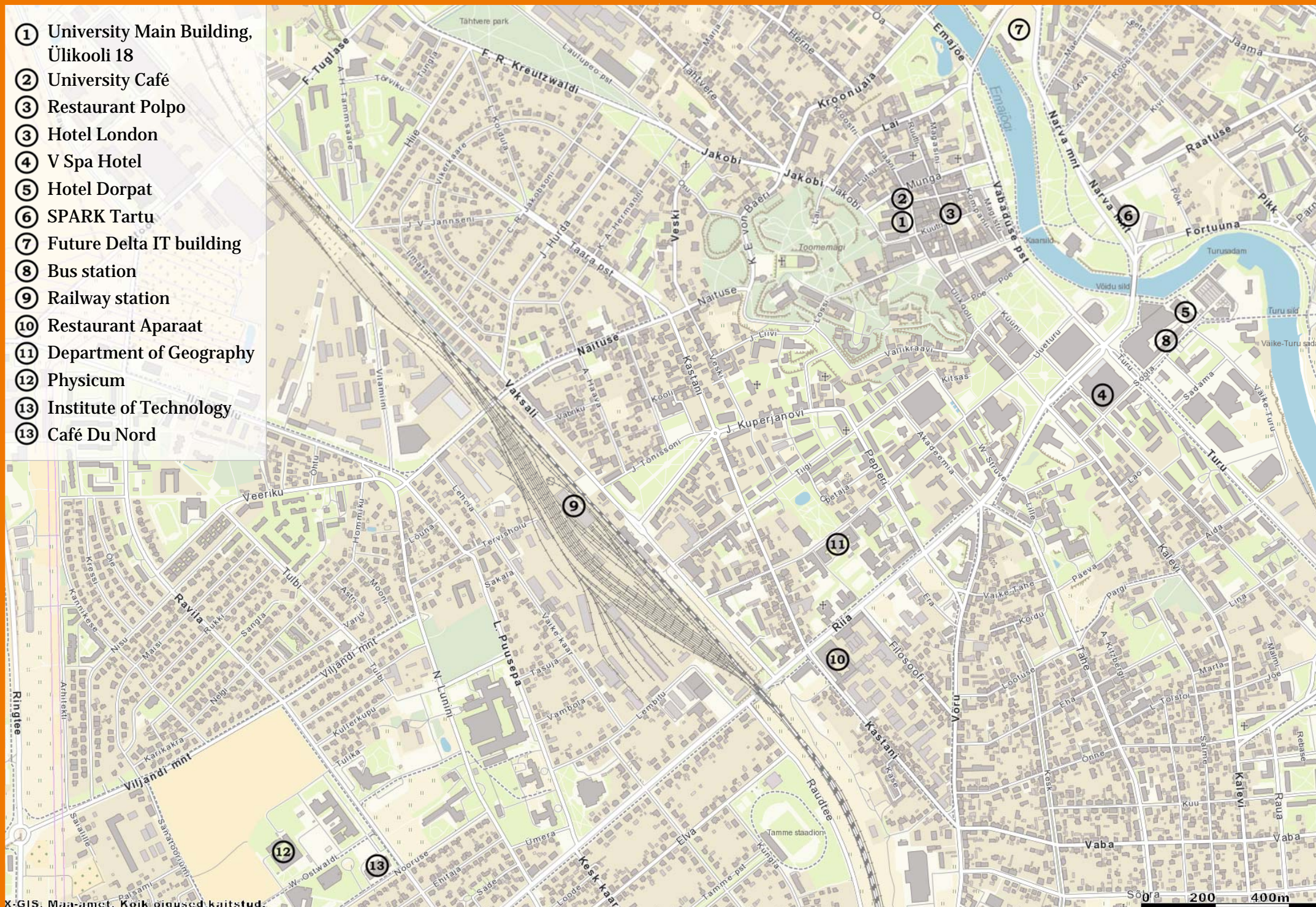


Kristi Post is assistant in the Department of Geography at University of Tartu and has a background in human geography. She is project coordinator of Interreg project Live Baltic Campus and the Horizon 2020 project SmartEnCity. She is also an Erasmus+ departmental coordinator.



Age Poom is lecturer in environmental management in Tartu University and just graduated her PhD studies in human geography. Her research focuses on final consumption and mobility, environmental management and impact assessment, and mobile methods in activity space and mobility studies.

- ① University Main Building, Ülikooli 18
- ② University Café
- ③ Restaurant Polpo
- ③ Hotel London
- ④ V Spa Hotel
- ⑤ Hotel Dorpat
- ⑥ SPARK Tartu
- ⑦ Future Delta IT building
- ⑧ Bus station
- ⑨ Railway station
- ⑩ Restaurant Aparaat
- ⑪ Department of Geography
- ⑫ Physicum
- ⑬ Institute of Technology
- ⑬ Café Du Nord



Bus transport to Maarjamõisa campus

Routes: Bus No 5, No 24

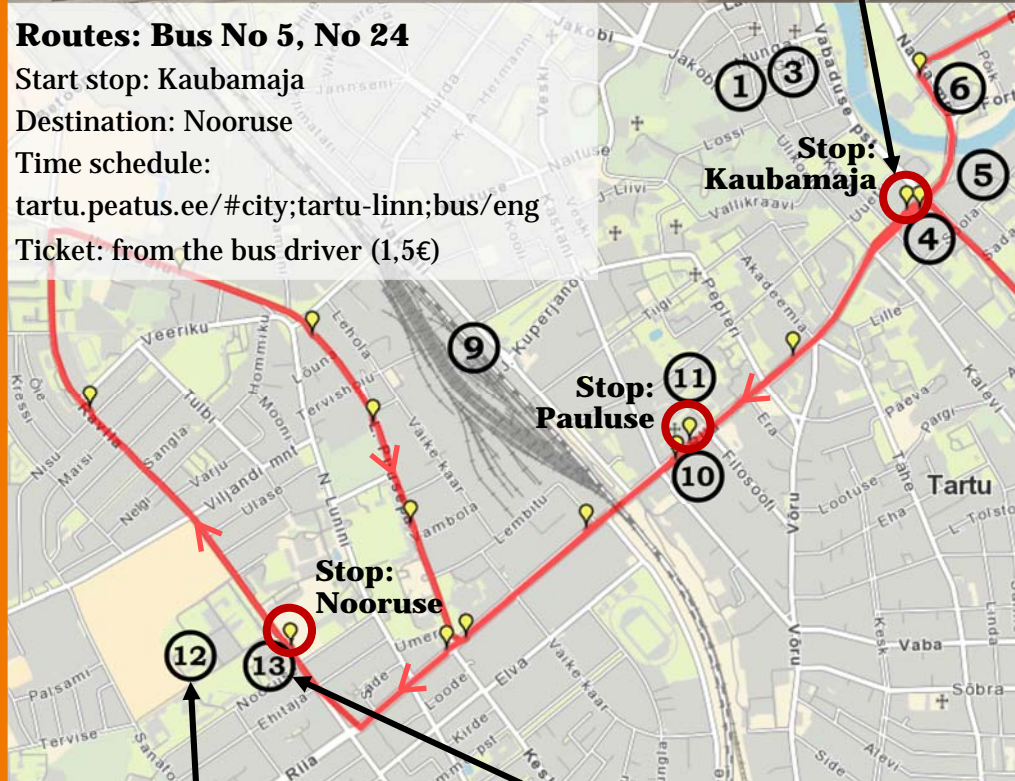
Start stop: Kaubamaja

Destination: Nooruse

Time schedule:

tartu.peatus.ee/#city:tartu-linn;bus/eng

Ticket: from the bus driver (1,5€)



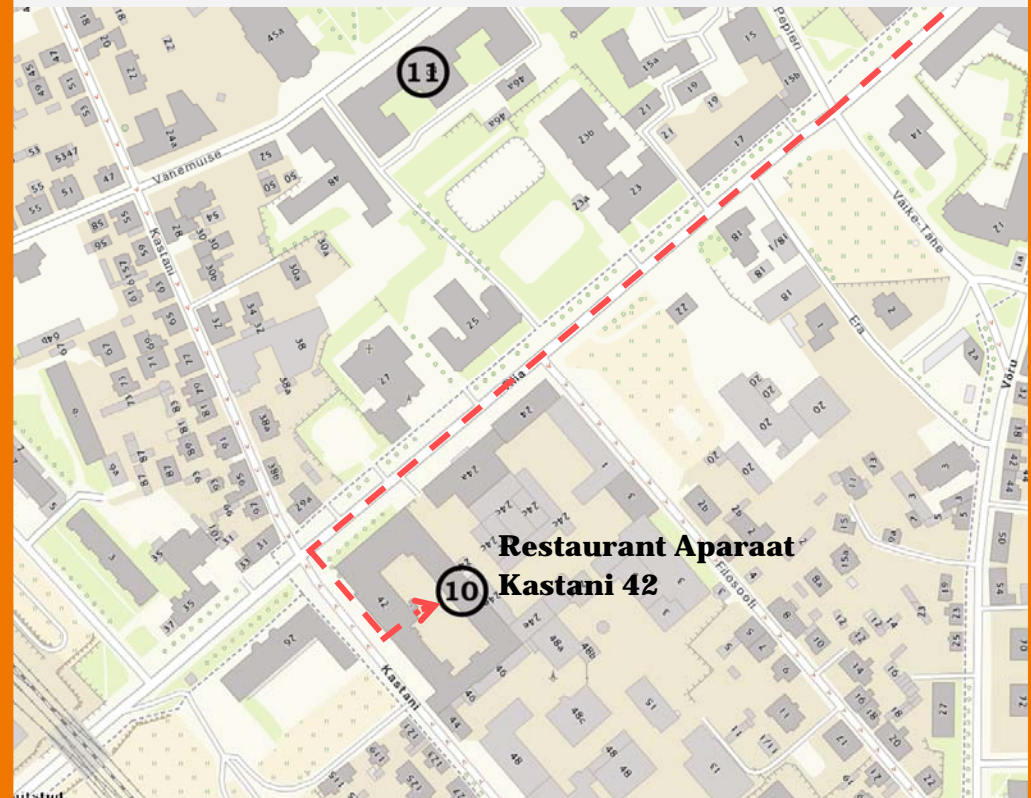
Physicum



**Institute of Technology
Café Du Nord**



Forum dinner at the Restaurant Aparaat



Sightseeing



Tartu city is one thousand years old and located between a beautiful Dome hill and the River Emajõgi. It is also a historic university town, Tartu University was founded in 1632. We encourage you to arrive earlier or stay later – there is a lot to see and experience!



AHHA Science Centre, www.ahhaa.ee/en

The biggest in the Baltics, hands-on exhibits, planetarium, workshops and more.

Estonian National Museum, erm.ee/en

Brand new museum at the fringe of Tartu, the real pearl of the Estonian and Finno-Ugric culture, a MUST for all visitors.

Tartu University Museum, www.muuseum.ut.ee/en

Four venues filled with the history of science and university education, art collections and ancient figures.

Natural History Museum of Tartu University

www.natmuseum.ut.ee/en

New permanent exhibition by the close neighbours of the Department of Geography, a lot to see and delve into!



Transport and accommodation

TRANSPORT

You can reach Tartu by flying to the local Tartu Airport or to the Tallinn Airport from where you can take a Lux Express bus to Tartu (departs from the city centre and from the airport at least once in every hour until 9 PM). It is better to buy a ticket in advance from Lux Express web page. You may also take an Elron train from Tallinn to Tartu.

Flights through Tartu Airport

Helsinki–Tartu:

6 March 20:50–21:35

7 March 10:55–11:45

Tartu–Helsinki:

8 March 21:55–22:40

9 March 12:10–12:55

Organizers provide transfer from Tartu airport on 7 March (noon) and to Tartu airport on 8 March (evening). If you wish to use the transfer, please let us know in the registration form. If you have any questions about the arrival, please contact kristi.post@ut.ee.

ACCOMMODATION

We kindly ask you to book the room by sending an email to the hotel. The keyword for special prices for period 6–9 March is “**LCF2017**”. Special rates are not valid if booked through external internet booking systems. Rooms and prices are subject to availability.

Hotel Dorpat

The hotel is located at the River Emajõgi in central Tartu, very close to Tartu bus station. Single 59€. Please send an e-mail info@dorpat.ee. Book before 15 Feb.

Hotel London

The hotel is located in a historic building in the core of the old town. Single 77€. Please send an e-mail london@tartuhotels.ee. Book before 5 Feb.

V Spa Hotel

Brand new spa hotel in central Tartu. Single 75€. Includes the visit to spa and sauna centre. Book before 5 Feb by sending an e-mail triinu@vspahotel.ee.



Live Baltic Campus

Live Baltic Campus is an Interreg project in the Baltic Sea Region, aiming to develop campuses as innovation hubs by creating better urban environment for business and residents, strengthen the collaboration within Central Baltic level, and accumulate expertise on using participatory design methods for urban development.

The partners of Live Baltic Campus project are as following:

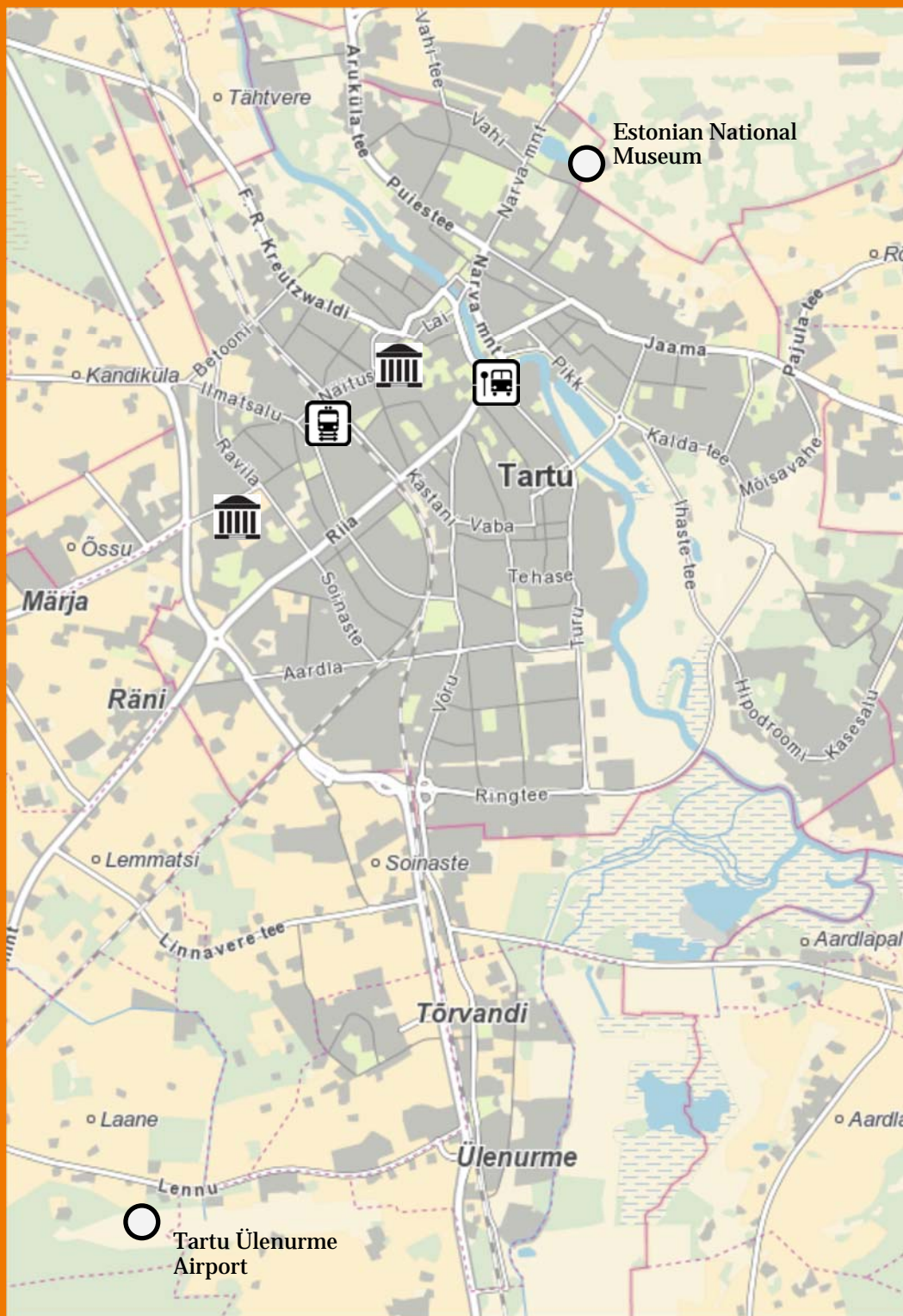
- ◆ Metropolia University of Applied Sciences
- ◆ City of Helsinki
- ◆ Helsinki-Uusimaa Regional Council
- ◆ University of Turku
- ◆ City of Turku
- ◆ University of Latvia
- ◆ Riga Planning Region
- ◆ Stockholm University
- ◆ Uppsala University
- ◆ University of Tartu

The project is funded by Central Baltic Programme and operates from October 2015 until March 2018.

Thank you for attending!

See you again at the next Livable City Forum in Riga in September 2017!





Location of venues

